



**MATERIAL HANDLING**



**NO JOB TOO HEAVY, OR TOO ODD**





**BUILT TO LAST WITH INDUSTRY-LEADING DURABILITY,** Rubbermaid Commercial Products Material Handling solutions enhance productivity and improve safety in virtually any commercial facility. Designed for the material handling professional, RCP's resilient products deliver superior ergonomics, organization, reliability and maneuverability for turning any job into a more efficient one.







## BULK TRUCKS

Collect, sort and transport tons of materials, supplies and waste with ease.



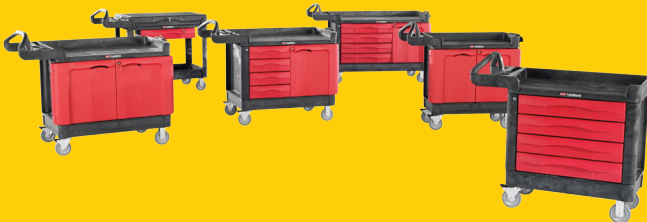
## CARTS

Transport up to 750 lbs. of material, equipment and supplies in any environment.



## PLATFORM TRUCKS

Tough, resilient Duramold™ deck won't warp, dent or rust and carries up to 2,500 lbs. of material.



## MOBILE WORKSTATIONS

Rugged and durable commercial grade structural foam means virtually no maintenance.



## STORAGE & SHELVING

Reinforced bottom with double-ribbed construction increases stability and protects against wear in all environments.

# BULK TRUCKS

**RUBBERMAID COMMERCIAL PRODUCTS BULK TRUCKS ARE BUILT TO LAST AND BUILT TO WORK.** Ergonomically designed to improve safety and control, these trucks set a new standard in efficiency when it comes to collecting, sorting and moving bulk materials. They stand up to the toughest tasks and will finish the toughest jobs.



## ROTOMOLDED TILT TRUCKS

**RCP'S RUGGED TILT TRUCKS FEATURE A THICK-WALLED BODY,** return rims to support critical wear areas, smooth, easy to clean surfaces and a stepped sidewall design to prevent load bulging. With a wide variety of colors, sizes, and weight capacities, there's a truck that's right for any job.



### TOWABLE, TRAINABLE AND FORKLIFTABLE

Towable, Trainable and Forkliftable models are ideal for transporting heavy loads longer distances. With a heavy-duty tow bar and hitch pin, multiple trucks can be trained together for increased efficiency and weight load capacity.



### SELF-DUMPING HOPPER

Safely ensures complete dumping by tilting 30° below horizontal. Forklift compatible for elevated lifting. Durable yet lightweight plastic body design resists rusting, denting and pitting.



# STRUCTURAL FOAM TILT TRUCKS

**RCP'S STRUCTURAL FOAM TILT TRUCKS HAVE A UNIQUE, ERGONOMICALLY SUPERIOR "STEERING WHEEL" HANDLE** that provides an easy-to-manuever system, significantly reducing strain on wrists, shoulders and back during transit. The solid structural foam construction won't chip or crack, handling the toughest jobs with ease.



## ERGONOMIC "STEERING WHEEL"

Provides better maneuvering capability.



## MOLDED-IN SECONDARY HANDLE

Supports safer unloading by improving balance and control.



## INSET WHEEL POSITION

Fits through standard doorways and onto elevators easily.



## OPTIONAL HINGED DOME LID

Conceals and contains contents and odors.

800.347.9800



# CUBE TRUCKS

## NEED A TRUCK FOR WASTE COLLECTION, MATERIAL TRANSPORT OR HANDLING LAUNDRY?

RCP's extensive cube truck offering can easily meet any of those needs. Diamond caster patterns afford easy maneuvering, while optional spring platforms elevate contents for easier loading and unloading. Easy-to-clean, solid walls withstand the demands of any job for a long lasting performance.



### DIAMOND PATTERN MOUNTED CASTERS

Casters are mounted on the sides, instead of the corners for easy maneuverability in tight spaces.



### SPRING PLATFORM

Elevates contents for easy loading and unloading, improving worker well-being.



# COLLAPSIBLE X-CART

**THE X-CART. IT'S VERSATILE, EFFICIENT AND DURABLE.** With multiple models to choose from, these durable basket truck systems feature a compact, lightweight frame that collapses by 75% to improve organization. Industry-leading weight-load capacity increases productivity, and sleek design provides discreet, quiet operation.



800.347.9800



# CARTS

**CARTS BY RUBBERMAID COMMERCIAL PRODUCTS MAKE MOVING SUPPLIES AND TOOLS EASY,** safe and efficient in any environment. The ergonomically superior design with integrated storage and organizational features allow users to work smarter, faster, and safer. Combine that with RCP's industry-leading durability, and there's no task too tough for these carts to handle.





## HEAVY-DUTY UTILITY CARTS

**RCP'S HEAVY-DUTY CARTS ARE TRUSTED EVERYWHERE FOR EVERYDAY WORK ACTIVITIES.** They're built to ensure safe material transport and improve productivity. From large work surfaces with built in storage and tool compartments to interchangeable components, RCP carts can fit all needs.



### STRUCTURAL FOAM

Won't leak, rust, chip, dent or peel, and maintaining a professional appearance



### ERGONOMIC VARIABLE GRIP-HEIGHT HANDLE

Improves control and reduces muscle strain.



### WEIGHT LOAD CAPACITY UP TO 750 LBS.

Move heavy loads with fewer trips, increasing productivity.

800.347.9800



## SERVICE CARTS

**VERSATILE, DURABLE SERVICE CARTS** offer a wide variety of solutions for both back- and front-of-house tasks. Designed to suit functional and aesthetic needs of each facility.



### INCREASED WEIGHT CAPACITY

Means fewer trips, improving productivity for more efficient transportation per payload.



### ERGONOMICALLY DESIGNED HANDLE

Rounded handle maintains ideal handle/wrist positioning to reduce muscle strain.



### REINFORCED SHELVES AND METAL UPRIGHTS

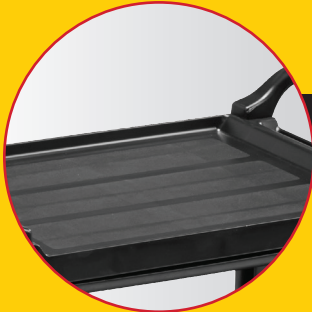
Offer superior stability and up to 300 lbs. weight load capacity.





### **PREMIUM, SWIVEL CASTERS**

Reduce noise and improve handling and control.



### **SMOOTH, EASY-TO-CLEAN SURFACES**

Maintain a professional appearance.



### **PANEL, CABINET, AND DRAWER CONFIGURATIONS**

Organize, conceal, and secure supplies.

800.347.9800





# PLATFORM TRUCKS

**RUBBERMAID COMMERCIAL PRODUCTS PLATFORM TRUCKS MOVE LARGE BULKY MATERIALS** and supplies safely and efficiently. From versatile systems that fulfill multiple needs, to specially designed products for task-specific jobs, RCP's Platform Truck solutions maximize productivity in any environment.



**DURAMOLD™ DECKS ARE FORMED FROM A PRECISION-ENGINEERED RESIN AND METAL COMPOSITE STRUCTURE** that is lighter than typical steel/wood products without sacrificing strength. This enables weight reduction and improved ergonomics. Will not warp, dent, splinter, rust, or rot and can hold up to 2,500 lbs.

## CONVERTIBLE A-FRAME TRUCK

**DURAMOLD™ CONSTRUCTED.** A unique design that combines the bulk load capacity of a standard panel truck and a bar stock truck with the functionality of a heavy-duty two-shelf cart. The easy to convert design is flexible for accommodating multiple tasks, but durable for the years to come. Capable of transporting oversized, heavy loads in one trip, saving time and energy.



## CONVERTIBLE PLATFORM TRUCK

**MULTIPLE CONFIGURATIONS TO HANDLE ANY JOB.** The three-in-one design quickly transforms from a standard platform truck or U-boat configuration into a two-shelf cart, making jobs more efficient by transporting heavy loads, tools, and supplies with one single product.



800.347.9800







## SHEET/PANEL/A-FRAME TRUCKS

Transport large, bulky sheet goods and hard-to-handle loads, such as doors, lumber, drywall, and furniture with sheet or panel trucks. The Duramold™ deck allows for heavy load support, while the removable, powder coated steel frames support materials vertically.



## WORK-HEIGHT PLATFORM TRUCKS

The adjustable design of the work-height platform trucks allows for three different Duramold™ platform heights, reducing work related injuries caused by strain of bending and lifting.



## FIFTH WHEEL WAGON TRUCKS

Capable of moving over rough, uneven, and varying terrain with shock absorbing wheels. The easy to grip vinyl handle and pull also rotates smoothly, affording a tight turning radius.



## STANCHION PLATFORM TRUCKS

Removable, heavy-duty steel corner posts allow easy access to bulky loads, such as roll goods, pipe, lumber, carpet, and linoleum.



## SIDE PANEL PLATFORM TRUCKS

Configurable 3" x 3" gridded sides accommodate and retain any size load from small packages to larger materials.



## TRIPLE® TROLLEY

Efficiently transports large, bulky loads and folds flat for easy storage. Versatile, three-position handle offers push, pull, or dolly capabilities.



## DOLLIES

Steel-reinforced, molded polyethylene deck offers a sturdy, but lightweight construction for a wide variety of moving tasks.

800.347.9800



# MOBILE WORKSTATIONS

**EASILY TRANSPORT TOOLS AND SUPPLIES WHERE YOU NEED THEM SAFELY, SECURELY, AND EFFICIENTLY.** Significantly improve work productivity by eliminating the need for multiple trips going from site-to-site.



## TRADEMASTER®

A complete tool storage and mobile workbench system, with multiple shelving and cabinet configurations to meet storage needs.



## 5-DRAWER WORK CENTER

Heavy-duty work surface supports up to 250 lbs. Easy to organize with built-in cord wrap, peg board sides, and lock bar that prevents drawers from opening during transport.





## LADDER CART

Adapt to the job or task at hand with a ladder, tools, and supplies all within arms' reach.



## TRADES CART

Mobile workbench ideal for less demanding environments. Enclosed bins, cabinet, and box keep smaller items contained to keep work surface clean and organized.

800.347.9800



# STORAGE AND SHELVING

**RUBBERMAID COMMERCIAL PRODUCTS STORAGE AND SHELVING SOLUTIONS CAN HELP MAINTENANCE AND CLEANING PROFESSIONALS STAY ORGANIZED AND EFFICIENT.** From a variety of rugged storage bins, totes and toolboxes to durable shelving systems, RCP makes sure there's a place for everything, improving productivity in any workplace.



## MOBILE RACKS

Designed for ingredient bins, but versatile enough to meet many storage and transport applications.



## DUNNAGE RACKS

Durable racks provide extra-high load capacities, circulate air for longer product life, and withstand extreme temperatures. Easy to clean and won't chip or rust over time. Compliant with all food safety guidelines.





Rubbermaid  
Commercial Products

**ORGANIZE, STORE, AND TRANSPORT IN STYLE WITH X-TRA™ MOBILE SHELVES.**

Locking, non-marking swivel casters aide mobility, while metal uprights and steel reinforced shelves easily support loads. Available with four or five shelves.



800.347.9800





# MULTIPLE CASTERS TO MEET

## YOUR NEEDS

Rubbermaid's best-in-class heavy-duty casters have been specially chosen for each of our products to meet your most demanding environments.



### POLYOLEFIN

Hard-tread polyolefin casters roll more easily than soft tread casters. Nonmarking, impact- and chemical-resistant casters won't flat-spot under static loads or pick up metal shavings, nails, and other debris.



### PNEUMATIC

Pneumatic casters provide a cushioned and quiet ride for fragile loads, making them ideal for rough and uneven surfaces, inside and outdoors.



### THERMOPLASTIC RUBBER (TPR)

TPR casters absorb shock, provide floor surface protection, and quiet operation. Chemical- and water-resistant.

RCP-383 / 141639

©2014 Rubbermaid Commercial Products LLC  
8900 Northpointe Executive Drive, Huntersville, NC 28078

To see our complete range of material handling solutions visit our online catalog at  
[rubbermaidcommercial.com](http://rubbermaidcommercial.com)

