

DRAINBOARDS

TS and TSD SERIES



Perlick Features

- Embossed stainless steel drainboard
- Screw-in legs for fast installation
- Stainless steel legs install without tools and have "Rust Free" Thermoplastic feet

MODELS

TS Series

- TS12*
- TS18*
- TS24
- TS30
- TS36
- TS42
- TS48

MODELS

TSD Series

- TSD12*
- TSD18*
- TSD24
- TSD30
- TSD36
- TSD42
- TSD48

** Available in 1" increments from 13" to 23"*



GENERATIONS OF
EXCELLENCE

Form No.DB01
Rev. 01.16.2012

Perlick[®]

8300 West Good Hope Road • Milwaukee, WI 53223 • Phone 414.353.7060 • Fax 414.353.7069
Toll Free 800.558.5592 • E-Mail perlick@perlick.com • www.perlick.com

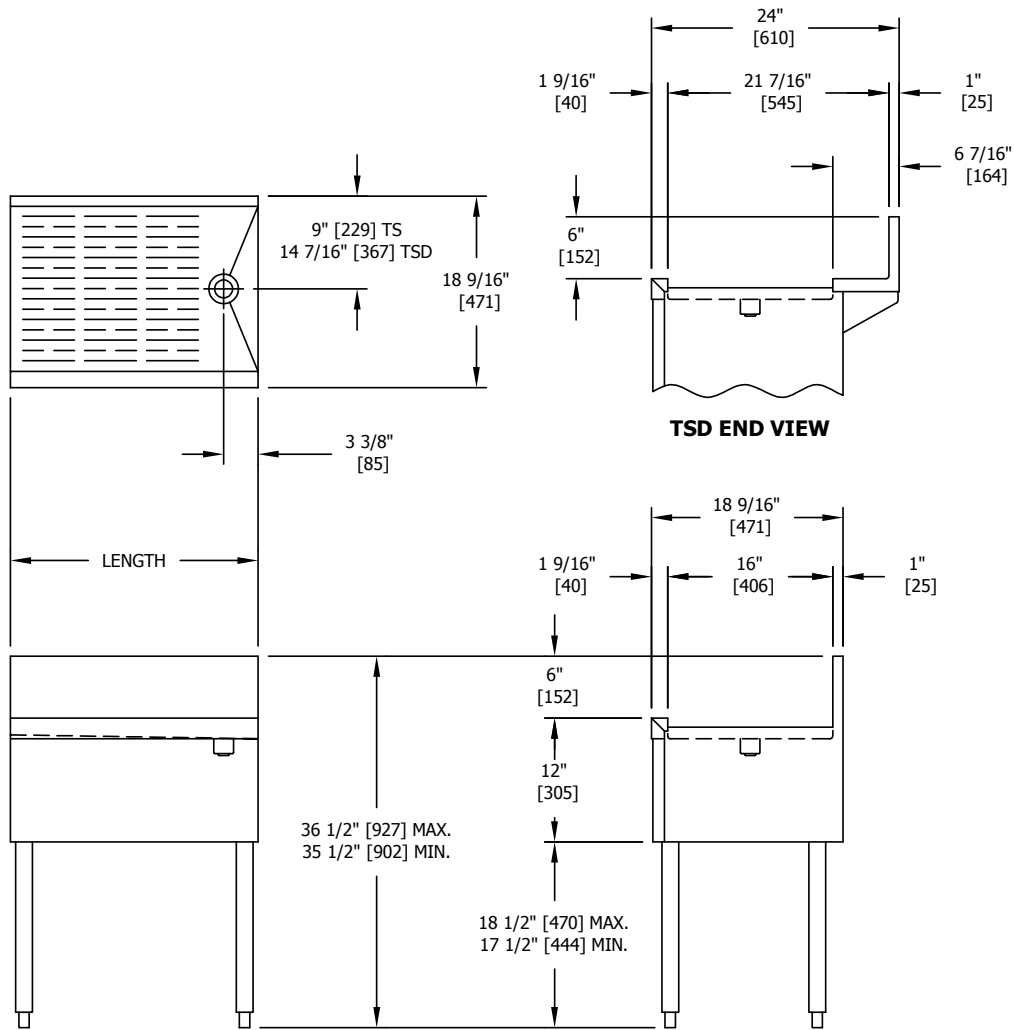
Size and Specifications

Drainboards - TS and TSD Series



Job _____
 Area _____
 Item No. _____
 Model No. _____

MODEL NOS.	TS(D)12	TS(D)18	TS(D)24	TS(D)30	TS(D)36	TS(D)42	TS(D)48
LENGTH IN. (mm)	12" (305)	18" (457)	24" (610)	30" (914)	36" (914)	42" (1067)	48" (1219)
SHIP WT. lbs. (kg)	35 (16)	40 (18)	45 (20)	50 (23)	60 (27)	90 (41)	115 (52)
FRONT & SIDES	Stainless steel						
BACKSPLASH	General and TS Series: Stainless steel 6" high (4" optional) with 1" return at top, mechanically fastened and sealed to top with steel support brackets TSD Series: Stainless steel rear deck						
BACK	Galvanized steel						
DRAINBOARD	Embossed stainless steel, 16" deep front to back. All horizontal and vertical edges 1/4" radius with ballbed corners. Underside reinforced with welded brackets. Stainless steel drain socket.						
LEGS	1-5/8" tubular, stainless steel with 1" adjustable thermoplastic foot						
PLUMBING	Drain connection- 1-1/2" NPS male						



Form No. DB01
 Rev. 01.16.2012



8300 West Good Hope Road • Milwaukee, WI 53223 • Phone 414.353.7060 • Fax 414.353.7069
 Toll Free 800.558.5592 • E-Mail perlick@perlick.com • www.perlick.com

Perlick is committed to continuous improvement. Therefore, we reserve the right to change specifications without prior notice